

OFFICIAL NCAA BASKETBALL BOX SCORE: \*\*\* FINAL \*\*\*

Date: 03-10-90 Site: Girls Sweet Sixteen, B.G.

VISITORS (Last Name, First)

NO.	Ohio County	Tot FG		3-POINT		FT	FTA	Rebounds			PF	TP	A	TO	BLK	S	TIME
		FG	FGA	FG	FGA			OFF	DEF	TOT							
04	Johnson, H.	4	11	0	0	0	1	1	3	4	0	8	0	1	0	27:22	
42	Burdin, Rachel	3	9	0	0	0	1	1	2	3	0	6	0	1	0	21:16	
40	Hoagland, Anglea	4	8	0	0	0	0	7	4	11	1	8	0	1	0	28:04	
30	Freeman, Nich.	2	7	0	0	1	2	3	2	5	0	0	0	2	0	31:01	
10	Carter, Missy	2	10	1	6	1	4	2	0	2	2	6	0	4	0	19:52	
24	Daugherty, Chr.	2	8	0	2	0	0	0	1	1	0	4	1	0	0	20:07	
34	Jones, Kim	0	2	0	1	0	0	1	3	4	0	0	0	1	0	8:00	
14	Raymer, Angela	0	2	0	1	0	0	0	0	0	1	0	0	0	0	1:46	
22	Hagan, Beverly	0	0	0	0	0	0	1	1	2	0	0	0	0	0	0:09	
32	Bandefur, Kristy	0	0	0	0	0	0	0	2	2	2	0	0	1	0	0:59	
12	Smith, Donne	0	1	0	1	0	0	0	0	0	0	0	0	0	0	0:34	
TEAM REBOUNDS (INCLUDED IN TOTALS)										1	1						
TOTALS		17	58	1	11	2	8	16	19	35	24	37	6	11	0	6	160

TOTAL FG	1st HALF	10/28	35.7%	2nd HALF	7/30	23.3%	GAME	17/58	29.3%	DEADBALL	
3-POINT FG	1st HALF	0/1	0.0%	2nd HALF	1/10	10.0%	GAME	1/11	9.1%	REBOUNDS	3
FREE THROWS	1st HALF	1/4	25.0%	2nd HALF	1/4	25.0%	GAME	2/8	25.0%		

HOME (Last Name, First)

NO.	Logan County	Tot FG		3-POINT		FT	FTA	Rebounds			PF	TP	A	TO	BLK	S	TIME
		FG	FGA	FG	FGA			OFF	DEF	TOT							
21	Goodman, Melodie	1	3	0	0	0	2	2	4	6	0	2	2	1	1	2	32:00
33	Dawson, Owen	0	0	0	0	0	0	0	0	0	1	0	0	1	0	0	11:50
41	Dean, Shana	5	7	0	0	6	6	1	5	6	2	16	0	0	1	1	31:41
35	Johnson, Kim	0	7	0	1	0	10	0	6	6	2	10	1	3	0	1	32:00
11	Horlander, C.	5	12	0	0	6	12	2	7	9	3	16	6	6	0	3	31:09
43	Stratton, Amy	1	2	0	0	1	2	1	3	4	2	3	1	0	0	0	21:01
51	Chyle, Randi	0	0	0	0	0	0	0	0	0	0	0	0	0	0	0	0:19
TEAM REBOUNDS (INCLUDED IN TOTALS)										4	4						
TOTALS		17	31	0	1	18	32	6	29	35	10	52	10	16	2	7	160

TOTAL FG	1st HALF	10/19	52.6%	2nd HALF	7/12	58.3%	GAME	17/31	54.8%	DEADBALL	
3-POINT FG	1st HALF	0/1	0.0%	2nd HALF	0/0	0.0%	GAME	0/1	0.0%	REBOUNDS	2
FREE THROWS	1st HALF	4/6	66.7%	2nd HALF	14/26	53.8%	GAME	18/32	56.3%		

OFFICIALS: Keith Clary, Jackie Cupp, ALT-C. Stovall  
 Technicals: None

SCORE BY PERIODS

Ohio County	9	12	8	8	=	37
Logan County	12	12	12	16	=	52

Attendance:

COMMENTS: POINTS OFF TURNOVERS

Ohio County 8 Logan County

SECOND CHANCE POINTS

12 Logan County

2

Player	Team	Logan County	Time	Score	Ohio County	Player	Team
4-7	57.1x	17-28 50.7x	Johnson, Kim 1 & Bonus - made 1st missed 2nd	4 0:51	Foul on Sandefur, Kristy	1	17
				4 0:51	*51-37		
4-8	58.0x	17-29 58.8x	Johnson, Kim 1 & Bonus - missed 1st	4 0:48	Foul on Kaymer, Angela	1	18
				4 0:48			
				4 0:39	Foul on JOHNSON, N.	2	19
				4 0:34	Sub In: Smith, Donna Out: JOHNSON, N.		
6-12	58.0x	17-30 58.8x	Horlander, C. 1 & Bonus - missed 1st	4 0:34			
				4 0:19	Foul on Sandefur, Kristy	2	20
3-9	58.5x	18-31 58.0x	Johnson, Kim 1 & Bonus - made	4 0:19	*52-37		
			Sub In: Chyle, Mandi Out: Bean, Shana	4 0:19			
3-10	58.0x	18-32 58.2x	Johnson, Kim 1 & Bonus - missed 1st	4 0:18			
				4 0:00	Dribbling Error on JONES, MIM	1	21
3-12	41.8x	17-33 54.8x	4 ft Lane Driving by Horlander, C., missed	4 0:00			

Ohio County "Lady Eagles" vs Logan County "Lady Cougars"  
2nd Half Play by Play

Tip off at 6:30 CST on 03/13/90 at Girl's Sweet Sixteen, R.C.  
Produced by the M.H.S.A.A. Stat Crew with FIMM III - a Product of LEXICON SPORTS

PAGE : 4

Player	Year	Logan County	Time	Score	Ohio County	Player	Year
Goodman, Melodie, Bean, Shana, Morlander, C., Johnson, Kim, Stratton, Amy		Ball to Lady Cougars Sub In: Dawson, Gwen Out: Morlander, C.	4 7:43		Carter, Missy, Freeman, Mich., Hoagland, Angles, Johnson, M., Daugherty, Chr.		
8-6 100x 10-13 76.2x		Bean, Shana 1 & Bonus - made both Sub In: Morlander, C. Out: Dawson, Gwen	4 7:38	*38-23	Foul on Johnson, M.	3	7
2-2 100x 12-13 80.0x		Johnson, Kim 1 & Bonus - made both	4 8:19	*40-23	Foul on Freeman, Mich.	3	8
3-11 42.4x 13-28 53.2x		7 ft Left Side Driving by Morlander, C.	4 8:23	*42-23			
4-7 37.1x 12-16 73.0x		Morlander, C. 1 & Bonus - missed 1st	4 8:34		Foul on Johnson, M.	4	8
3-9 33.3x 13-18 72.2x		Morlander, C. 1 & Bonus - made 1st missed end	4 8:34		Sub In: Jones, Kim Out: Johnson, M.		
4-6 55.6x 16-23 33.1x		4 ft Lane Bank by Johnson, Kim	4 8:34		Sub In: Burdin, Rachel Out: Carter, Missy		
		REB: 25 A: 9 BLK: 2 TO: 13 PF: 3	4 8:47		Foul on Burdin, Rachel	3	10
		S: 6 FT: 12-18 72.2x FG: 16-23 33.1x	4 8:47	*43-23	Sub In: Carter, Missy Out: Burdin, Rachel		
		LINE - O U T	4 8:58	*43-21	6 ft Lane Driving by Carter, Missy	2-7	28.2x 14-41 34.1x
			4 9:00		REB: 21 A: 6 BLK: 0 TO: 9 PF: 10		
3-7 71.4x 17-30 26.6x		8 ft Lane Bank by Johnson, Kim Assist by Stratton, Amy	4 9:04	*47-21	Ohio County No. 2	S: 7 FT: 2-6 33.3x FG: 14-42 33.3x	
1-2 30.0x 14-20 70.0x		Stratton, Amy 1 & Bonus - made 1st missed end	4 9:24	47-23*	8 ft Right Side Line Driving by Daugherty, Chr.	2-6	33.3x 13-43 33.3x
2-2 60.0x 14-21 55.6x		Goodman, Melodie 1 & Bonus - missed 1st	4 9:29		Foul on Daugherty, Chr.	3	11
2-3 55.6x 14-22 53.5x		Johnson, Kim 1 & Bonus - missed 1st	4 9:29	*48-23	Sub In: Johnson, M. Out: Jones, Kim		
6-11 34.3x 13-24 52.2x		Morlander, C. 1 & Bonus - made 1st missed end Sub In: Dawson, Gwen Out: Stratton, Amy	4 9:27	48-23*	6 ft Left Side Follow by Hoagland, Angles	3-6	20.0x 15-47 34.0x
		Sub In: Stratton, Amy Out: Dawson, Gwen	4 9:23		Foul on Daugherty, Chr.	4	12
		Foul on Stratton, Amy	4 9:23		Sub In: Jones, Kim Out: Hoagland, Angles		
			4 9:49		Foul on Carter, Missy	1	13
			4 9:46		Foul on Daugherty, Chr.	3	14
			4 9:46	*49-23	Sub In: Raymer, Angela Out: Daugherty, Chr.		
			4 9:32		Sub In: Hoagland, Angles Out: Jones, Kim		
			4 9:31		Foul on Carter, Missy	2	13
			4 9:30		Sub In: Jones, Kim Out: Johnson, M.		
			4 9:29				
			4 9:14		Sub In: Johnson, M. Out: Jones, Kim		
			4 9:14		Carter, Missy 1 Free Throw - missed	1-3	33.3x 2-7 28.2x
			4 9:13		Carter, Missy 1 Free Throw - missed	1-4	25.0x 2-8 25.0x
			4 9:09	49-37*	Follow Layup by Hoagland, Angles	4-8	30.0x 17-25 36.0x
			4 9:09		Foul on Hoagland, Angles	1	16
			4 9:09		Sub In: Jones, Kim Out: Hoagland, Angles		
			4 9:09	*50-37	Sub In: Hagan, Beverly Out: Freeman, Mich.		
			4 9:09		Sub In: Sandefur, Kristy Out: Carter, Missy		
			4 9:01				

Ohio County "Lady Eagles" vs Logan County "Lady Cougars"  
2nd Half Play by Play

PAGE : 3

Tip off at 6:30 CST on 03/13/90 at Girls Sweet Sixteen, R.G.  
Produced by the N.H.S.A.A. Stat Crew with FINRA 111 - a Product of LEXICOM SPORTS™

Player	Team	Logan County	Time	Score	Ohio County	Player	Team	
Morlander, C., Goodman, Melodie, Johnson, Kim, Bean, Shana, Stratton, Amy			Johnson, M., Burdin, Rachel, Hoagland, Anglea, Freeman, Nich., Carter, Missy Ball to Lady Eagles					
4-6	66.6x	6-8 73.0x	3	7:43	Foul on Freeman, Nich.	1	1	
Morlander, C. 2 Free Throws - made both			3	7:43 *26-21				
2-3	66.6x	11-21 32.3x	3	7:44	Foul on Burdin, Rachel	2	2	
3	6	4 ft Lane Bank by Johnson, Kim Assist by Morlander, C.	3	8:46 *28-21				
1-3	33.3x	12-24 30.0x	3	8:23	3 ft Lane Jump shot by Johnson, M. Assist by Burdin, Rachel	4-6	30.0x 11-20 35.6x	
6	7	4 ft Lane Bank by Goodman, Melodie Assist by Morlander, C.	3	8:31	Foul on Burdin, Rachel	3	3	
			3	8:31	Sub In: Daugherty, Chr. Out: Carter, Missy	3	3	
			3	8:31 *30-23				
REB: 17 R: 7 BLK: 2 TO: 7 FF: 0			3	8:00	REB: 17 R: 3 BLK: 0 TO: 6 FF: 3			
S: 3 FT: 6-8 75.0x FG: 12-24 30.0x			T I M E - O U T Ohio County No. 1				S: 3 FT: 1-4 25.0x FG: 11-31 35.4x	
3-4	75.0x	13-23 32.0x	3	4:00 *32-23				
1	8	6 ft Lane Bank by Johnson, Kim Assist by Goodman, Melodie	3	9:21	Foul on Johnson, M.	2	4	
3-7	71.4x	14-26 33.8x	3	3:48 *34-23				
2	9	4 ft Lane Bank by Bean, Shana Assist by Goodman, Melodie	3	2:31	Foul on Burdin, Rachel	4	3	
4-4	100x	8-10 80.0x	3	2:31 *36-23				
2	1	Bean, Shana 1 & Bonus - made both	3	2:31	Sub In: Carter, Missy Out: Burdin, Rachel			
		Foul on Morlander, C.	3	2:42				
			3	2:42	36-24* Carter, Missy 1 Free Throw - made	1-1	100x 2-5 40.0x	
			3	2:42	Carter, Missy 1 Free Throw - missed	1-2	30.0x 2-6 33.3x	
			3	2:07	Foul on Freeman, Nich.	2	6	
0-1	00.0x	8-11 72.7x	3	2:07	Sub In: Jones, Kim Out: Johnson, M.			
1	2	Goodman, Melodie 1 & Bonus - missed 1st Foul on Stratton, Amy	3	2:07				
			3	2:06	Sub In: Johnson, M. Out: Hoagland, Anglea			
			3	2:06	36-27* 3 pt 20 ft Circle Jump shot by Carter, Missy Assist by Daugherty, Chr.	1-4	25.0x 12-33 34.2x	
			3	1:14	36-29* Follow Layup by Freeman, Nich.	1	6	
3	3	Foul on Morlander, C.	3	0:04		2-6	33.3x 13-37 35.1x	

BOX SCORE: \* OFFICIAL FIRST HALF \* Date: 03-13-90 Site: Girls Sweet Sixteen, B.G. Attendance:  
 Team: Ohio County

NO.	NAME	TOTAL FG		3-POINT			FT	FTA	REB					PF	TP	A	TO	BLK	S	TIME
		FG	FGA	FG	FGA				O	D	T	I								
34	Johnson, M.	3	7	0	0	1	0	1	1	1	1	2	1	6	0	0	0	0	0	14:38
42	Burdin, Rachel	3	7	0	0	1	0	1	1	1	2	1	6	4	0	0	0	3	16:00	
40	Hoagland, Anglea	2	5	0	0	1	0	0	3	2	5	0	4	0	1	0	0	0	16:00	
30	Freeman, Mich.	1	4	0	0	1	1	2	2	2	4	0	3	0	1	0	1	1	16:00	
10	Carter, Missy	0	2	0	1	1	0	0	1	0	1	0	0	0	1	0	1	1	7:38	
24	Daugherty, Chr.	1	3	0	0	1	0	0	0	0	0	2	2	0	0	0	0	0	8:22	
34	Jones, Kim	0	0	0	0	1	0	0	0	0	0	0	0	0	0	0	0	0	1:02	
TEAM										1	1									
TOTALS		10	26	0	1	1	4	6	7	15	4	21	4	3	0	5	5	60		
Percentages:		HALP-----		FG		10/ 26	35.7%	3-PT.		0/ 1	0.0%	FT		1/ 4	25.0%					
		Period 1				4/ 14	28.6%			0/ 0	0.0%			1/ 2	50.0%					
		Period 2				6/ 14	42.9%			0/ 1	0.0%			0/ 2	0.0%					

1 Deadball Rebounds

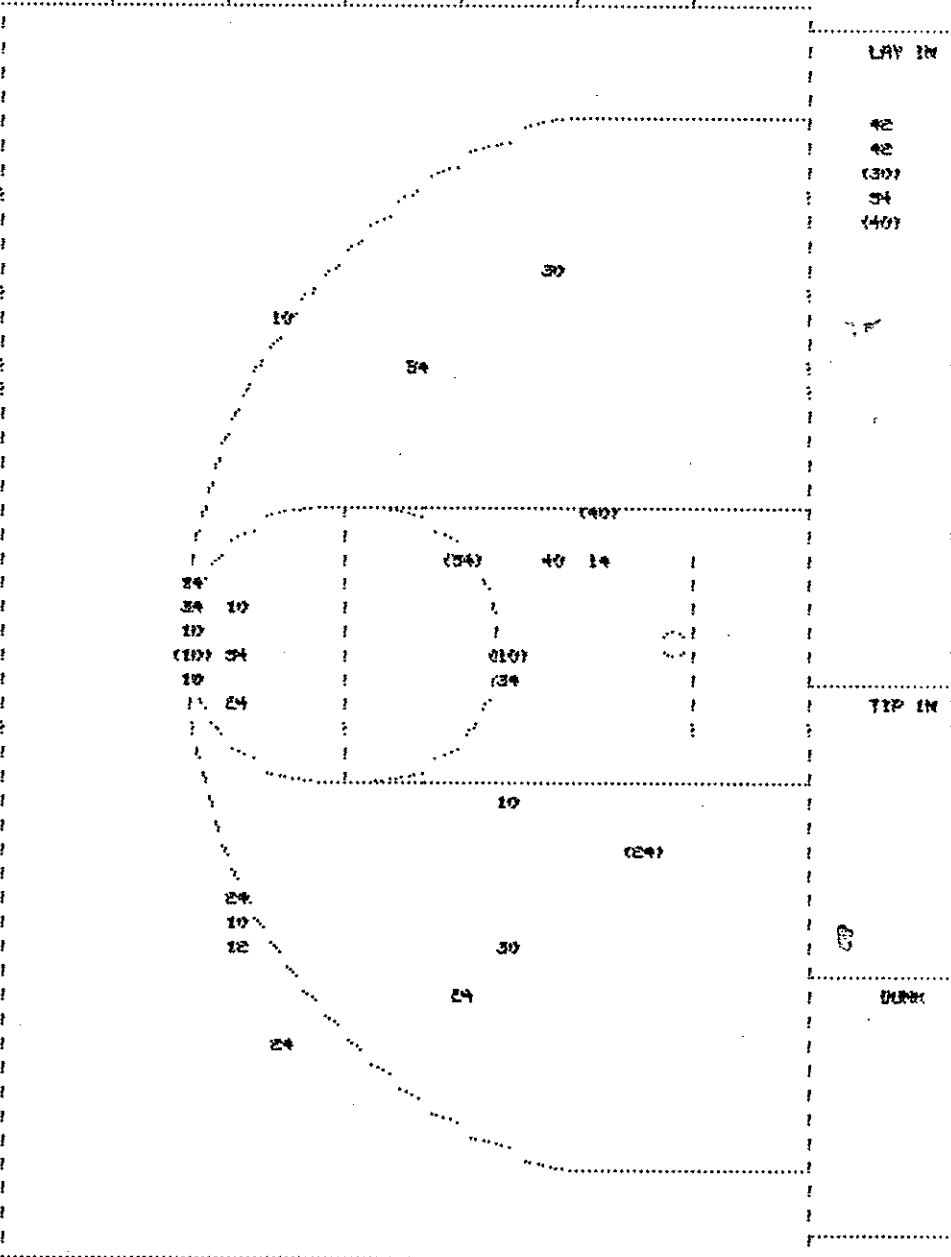
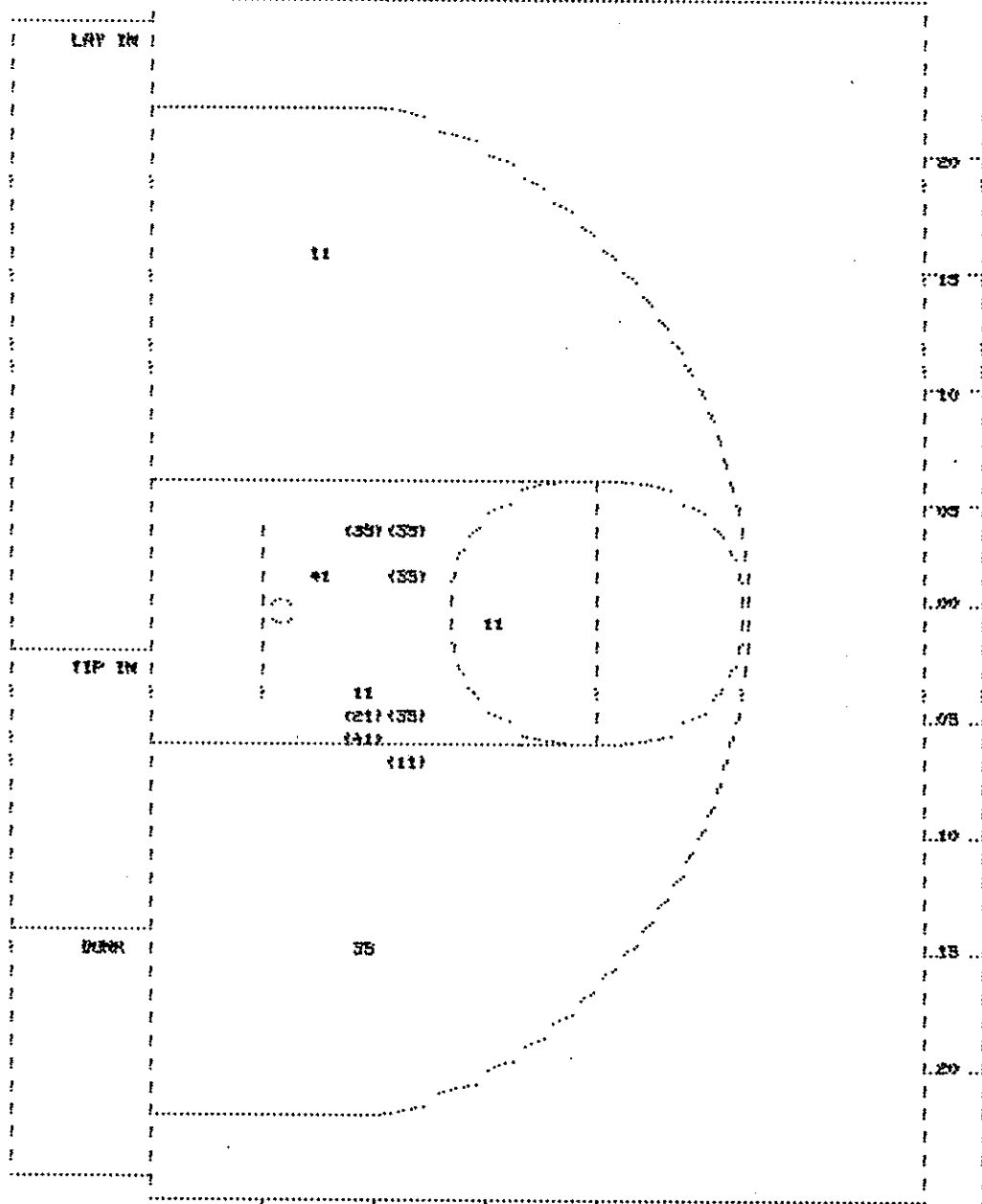
Team: Logan County

NO.	NAME	TOTAL FG		3-POINT			FT	FTA	REB					PF	TP	A	TO	BLK	S	TIME
		FG	FGA	FG	FGA				O	D	T	I								
21	Goodman, Melodie	0	2	0	0	1	0	0	2	1	3	0	0	0	1	1	0	0	16:00	
33	Dawson, Gwen	0	0	0	0	1	0	0	0	0	0	1	0	0	0	0	0	0	10:49	
41	Dean, Shana	4	5	0	0	1	2	2	0	3	3	2	10	0	1	1	0	0	16:00	
35	Johnson, Kim	1	2	0	1	1	0	0	0	3	3	2	2	1	3	0	0	0	16:00	
11	Horlander, C.	4	6	0	0	1	2	4	0	4	4	1	10	4	2	0	2	2	15:16	
43	Stratton, Amy	1	2	0	0	1	0	0	0	0	0	0	2	0	0	0	0	0	5:55	
TEAM										1	1									
TOTALS		10	19	0	1	4	6	2	12	14	6	24	5	7	2	2	2	60		
Percentages:		HALP-----		FG		10/ 19	52.6%	3-PT.		0/ 1	0.0%	FT		4/ 6	66.7%					
		Period 1				4/ 6	66.7%			0/ 0	0.0%			4/ 6	66.7%					
		Period 2				6/ 13	46.2%			0/ 1	0.0%			0/ 0	0.0%					

2 Deadball Rebounds

OFFICIALS: Keith Clary, Jackie Cupp, ALT-C. Stovall  
 Technicals: None

SCORE BY PERIODS			
Ohio County	9	12	= 21
Logan County	12	12	= 24



Logan County		Player		Player	
11 - Harlander, M	1 / 4	25.0%			
21 - Goodman, HE	1 / 1	100.0%			
33 - Johnson, M	4 / 3	80.0%			
41 - Dean, Shan	1 / 2	50.0%			
Layups	1-7 Ft	10-15 Ft	Over 15 Ft	3 Pointers	Total
	7 / 10	0 / 1	0 / 1		7 / 12
	70.0%	0.0%	0.0%		58.3%

Ohio County		Player		Player	
10 - Carter, MI	2 / 3	66.7%	34 - Jones, RW	0 / 2	0.0%
12 - Smith, Don	0 / 1	0.0%	40 - Hoagland, A	2 / 3	66.7%
14 - Raymer, AN	0 / 2	0.0%	42 - Burdick, RB	0 / 2	0.0%
24 - Daugherty, J	1 / 3	33.3%	34 - Johnson, M	1 / 4	25.0%
30 - Freeman, H	1 / 3	33.3%			
Layups	1-7 Ft	10-15 Ft	Over 15 Ft	3 Pointers	Total
	2 / 3	4 / 6	0 / 1	0 / 6	1 / 10
	66.7%	66.7%	0.0%	0.0%	10.0%
					23.3%

Ohio County "Lady Eagles" vs Logan County "Lady Cougars"  
1st Half Play by Play

PAGE : 1

Tip off at 6:30 CST on 03/13/90 at Girl's Sweet Sixteen, S.G.  
Produced by the N.H.S.R. Stat Crew with FIMBL 111 - a Product of LEXICON SPORTS™

Player	Team	Logan County	Time	Score	Ohio County	Player	Team
		Goodman, Melodie, Dawson, Gwen, Dean, Shana, Johnson, Kim, Norlander, C. Ball to Lady Cougars			Johnson, M., Burdin, Rachel, Hoagland, Angies, Freeman, Mich., Carter, Missy		
1-2	30.0x	1-2 30.0x 7 ft Lane Jump shot by Norlander, C.	1	6:37	*2-0		
0-1	00.0x	0-1 00.0x Norlander, C. - missed 1st	1	6:25			
1-2	30.0x	1-2 30.0x Norlander, C. - made	1	6:25			
1		1 Foul on Norlander, C.	1	6:08			
1-1	100x	2-4 30.0x 4 ft Lane Turnaround by Dean, Shana Assist by Johnson, Kim	1	5:33	3-2*	1-3	33.3x 1-8 12.0x
			1	4:53	*3-2		
			1	4:28	5-4*	1-4	23.0x 2-9 22.0x
			1	4:17		1	1
2-4	30.0x	2-4 30.0x Norlander, C. 2 Free Throws - missed 1st made 2nd	1	4:17	*6-4	1	2
2-4	30.0x	3-3 50.0x 4 ft Lane Driving by Norlander, C.	1	3:39	*9-4		
1		1 Foul on Dean, Shana	1	3:12			
1		1 Foul on Dawson, Gwen	1	3:12	8-5*	1-2	30.0x 1-2 30.0x
			1	2:27			
			1	2:16	8-7*	1-2	30.0x 2-11 27.0x
			1	2:00	8-9*	2	2
			1	1:44		1-2	30.0x 4-12 33.3x
			1	1:30		1	3
2-2	100x	4-5 55.5x Dean, Shana 2 Free Throws - made both	1	1:23	*10-9	2	4
2		2 Foul on Dean, Shana	1	1:03			
1-1	100x	4-5 55.5x 8 ft Lane Jump shot by Johnson, Kim	1	0:01	*12-9		

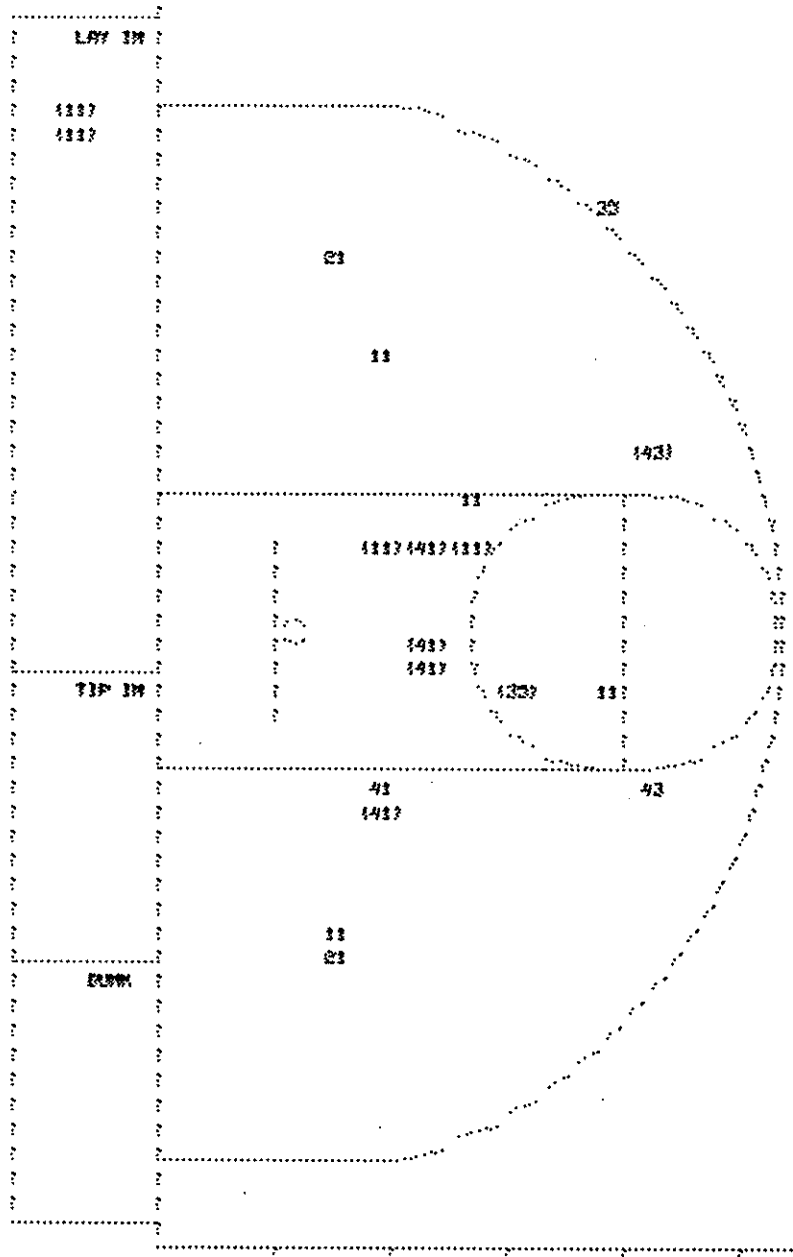
Ohio County "Lady Eagles" vs Logan County "Lady Cougars"  
1st Half Play by Play

Tip off at 6:30 CST on 03/13/99 at Girls Sweet Sixteen, R.G.  
Produced by the M.H.S.A.R. Stat Crew with FIMM 111 - a Product of LEXICON SPORTS-

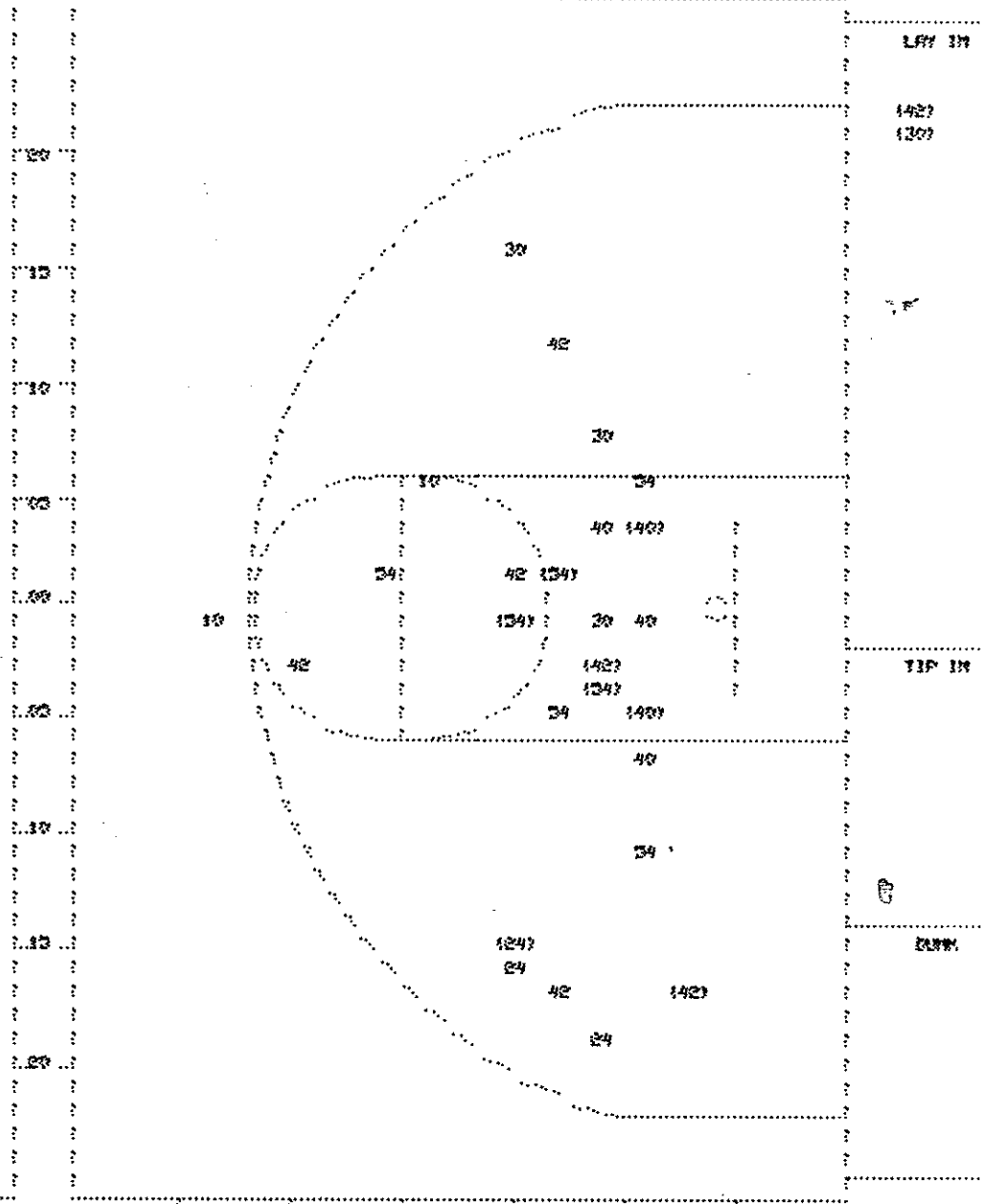
PAGE : 2

Player	Team	Logan County	Time	Score	Ohio County	Player	Team
Morlander, C., Bean, Shana, Johnson, MIM, Goodman, Melodie, Dawson, Gwen Ball to Lady Cougars			Hoagland, Anglea, Daugherty, Chr., Johnson, M., Burdin, Rachel, Freeman, Mich.				
			2 7:49	12-11* 4 ft Lane Bank by Burdin, Rachel		2-4	50.0% 3-13 33.3%
			2 7:13	12-13* 4 ft Lane Bank by Hoagland, Anglea Assist by Burdin, Rachel		2-4	50.0% 6-16 37.5%
1	3	Foul on Johnson, MIM	2 6:33			3	3
		PER: 3 R: 1 RLM: 2 TO: 3 PF: 3 S: 1 FT: 4-6 66.6% FG: 4-7 57.1%	2 6:30		PER: 6 R: 3 RLM: 0 TO: 2 PF: 4 S: 4 FT: 1-2 50.0% FG: 6-16 37.5%		
No. 1 Logan County TIME - O U T			2 6:30	Johnson, M. 1 & Bonus - missed 1st		0-1	00.0% 1-3 33.3%
2-3	66.6%	3-8 62.5%	2 6:29	*14-13			
1		2 4 ft Lane Bank by Bean, Shana Assist by Morlander, C.	2 6:22	14-15* Follow Layup by Freeman, Mich.		1-3	33.3% 7-18 38.9%
3-3	60.0%	6-9 66.6%	2 6:12	*16-13			
		Layup Off Fast Break by Morlander, C. Sub In: Stratton, Amy Out: Morlander, C.	2 3:23				
			2 3:23	16-17* 6 ft Lane Jump shot by Johnson, M. Assist by Burdin, Rachel		2-3	40.0% 8-19 42.1%
2	5	Foul on Johnson, MIM Sub In: Morlander, C. Out: Dawson, Gwen	2 3:11			4	4
			2 3:11				
			2 3:11		Sub In: Carter, Micky Out: Daugherty, Chr. Burdin, Rachel 1 Free Throw - missed	0-1	00.0% 1-4 25.0%
1-1	100%	7-10 70.0%	2 3:07				
2		3 16 ft Right Angle Jump shot by Stratton, Amy Assist by Morlander, C.	2 4:41	*18-17			
3-4	75.0%	8-11 72.7%	2 4:13	*20-17			
3		4 6 ft Lane Bank by Bean, Shana Assist by Morlander, C.	2 3:56	20-19* 4 ft Lane Follow by Johnson, M.		3-6	50.0% 9-23 39.1%
4-3	80.0%	9-12 75.0%	2 3:40	*22-19			
4		5 6 ft Left Side Turnaround by Bean, Shana Assist by Morlander, C.	2 3:27	22-21* 16 ft Right Base Line Jump shot by Burdin, Rachel		3-3	60.0% 10-24 41.6%
4-6	66.6%	10-13 76.9%	2 3:17	*24-21			
		PER: 9 R: 3 RLM: 2 TO: 6 PF: 6 S: 1 FT: 4-6 66.6% FG: 10-13 76.9%	2 2:34		PER: 11 R: 4 RLM: 0 TO: 2 PF: 4 S: 4 FT: 1-4 25.0% FG: 10-23 40.0%		
No. 2 Logan County TIME - O U T			2 2:32		PER: 11 R: 4 RLM: 0 TO: 2 PF: 4 S: 4 FT: 1-4 25.0% FG: 10-23 40.0%		
			2 1:02	Sub In: Jones, MIM Out: Johnson, M.			





Logan County					
Player		Player		Player	
11 - Morlander,	4 / 8	30.0%			
21 - Goodman, M	0 / 2	0.0%			
33 - Johnson, M	1 / 2	50.0%			
41 - Dean, Shan	4 / 5	80.0%			
43 - Stratton,	1 / 2	50.0%			
Layups	1-9 Ft	10-15 Ft	Over 15 Ft	3 Pointers	Total
2 / 2	7 / 7	0 / 3	1 / 2	0 / 1	10 / 15
100.0%	77.0%	0.0%	50.0%	0.0%	50.0%



Ohio County					
Player		Player		Player	
10 - Carter, M	0 / 2	0.0%	34 - Johnson, M	3 / 7	42.8%
24 - Baugherty,	1 / 3	33.3%			
33 - Freeman, M	1 / 4	25.0%			
40 - Hoagland, R	2 / 5	40.0%			
42 - Burdin, R	3 / 7	42.8%			
Layups	1-9 Ft	10-15 Ft	Over 15 Ft	3 Pointers	Total
2 / 2	6 / 14	0 / 4	2 / 7	0 / 1	10 / 28
100.0%	42.9%	0.0%	28.6%	0.0%	35.7%